

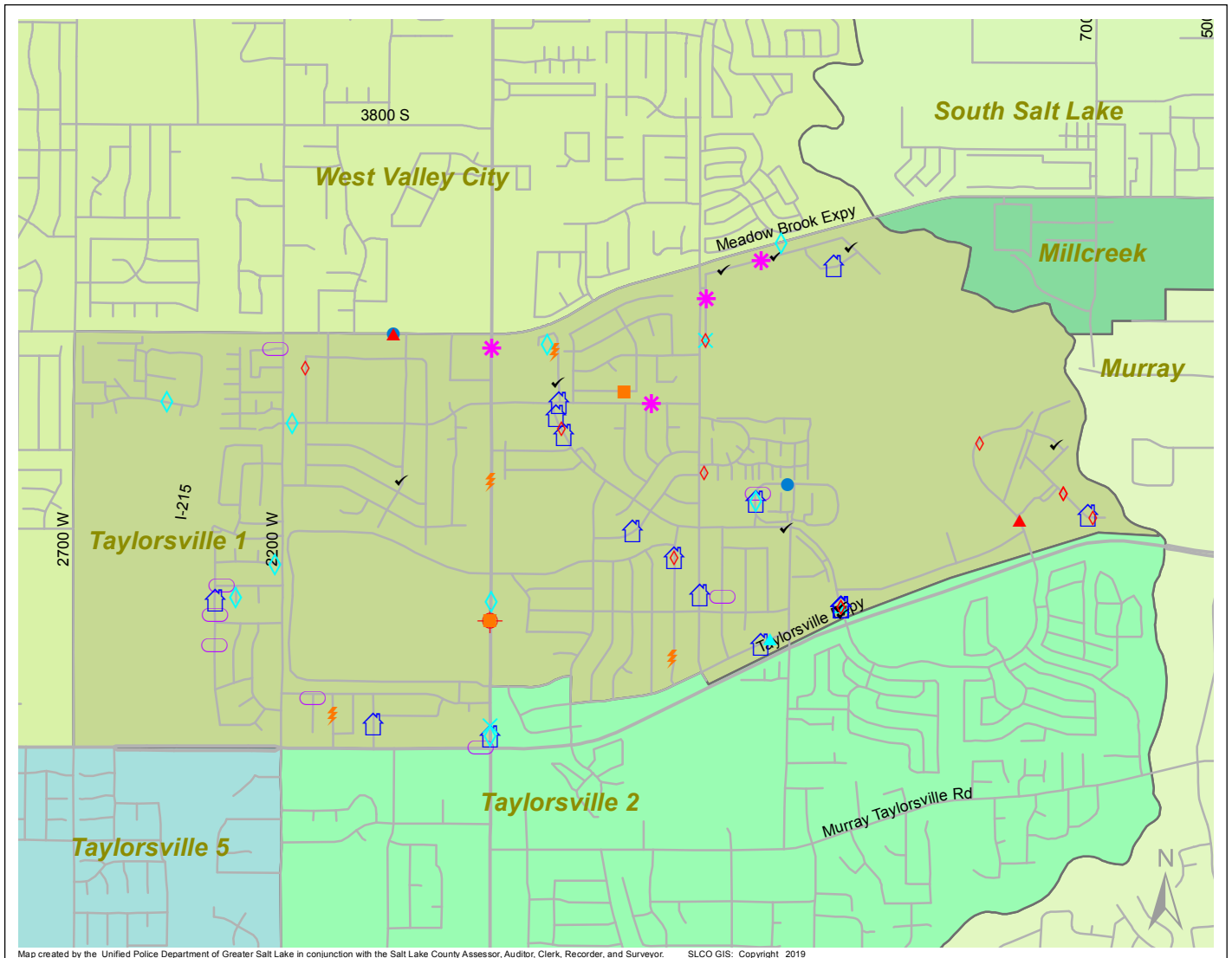
# Case Report: Taylorsville 1

2019

Jan



**UNIFIED  
POLICE**  
GREATER SALT LAKE



Map created by the Unified Police Department of Greater Salt Lake in conjunction with the Salt Lake County Assessor, Auditor, Clerk, Recorder, and Surveyor. SLCO GIS: Copyright 2019

Total Number of Calls: 700  
 Total Number of Cases: 199  
 Total Number of Offenses: 242

| SUMMARY OF GROUP A CRIMES   |                                      |
|-----------------------------|--------------------------------------|
| <b>Arson:</b> 2             | <b>Domestic Violence:</b> 18         |
| <b>Assaults:</b> 7          | <b>Drive-By Shootings:</b> 1         |
| --Aggravated: 3             | <b>Drug Offenses:</b> 12             |
| --Simple: 4                 | <b>Gang-related:</b> 1               |
| <b>Auto Thefts:</b> 9       | <b>Graffiti:</b> 2                   |
| <b>Burglary:</b> 2          | <b>Hate Crimes:</b> Unavailable      |
| --Business: 0               | <b>Juvenile-related:</b> Unavailable |
| --Residential: 2            | <b>Sex Crimes:</b> 2                 |
| <b>Homicide:</b> 0          | <b>Suspicious Circumstances:</b> 13  |
| <b>Sexual Assault:</b> 2    | <b>Vandalism:</b> 5                  |
| <b>Robbery:</b> 0           | <b>Weapon Violation:</b> 2           |
| <b>Theft/Larceny:</b> 9     | <b>Weapon/Force Involved:</b> 13     |
| <b>Vehicle Burglary:</b> 11 | 1 (Gun): 0                           |
|                             | 2 (Knife): 1                         |
|                             | 3 (Force Involved): 2                |
|                             | 5 (Unknown): 1                       |
|                             | 6 (Rifle/Shotgun): 0                 |

- LEGEND:**
- Arson
  - Assault-Aggravated or Simple
  - Auto Theft
  - Burglary-Business or Residential
  - Domestic Violence
  - Drive-By Shooting
  - Drug-related Offense
  - Graffiti
  - Homicide
  - Sexual Assault
  - Robbery
  - Sex Offense
  - Suspicious Circumstance
  - Theft/Larceny
  - Vandalism
  - Vehicle Burglary
  - Weapon Violation

Note: These count totals represent activity in the designated area ONLY, and only during the specified time period.