

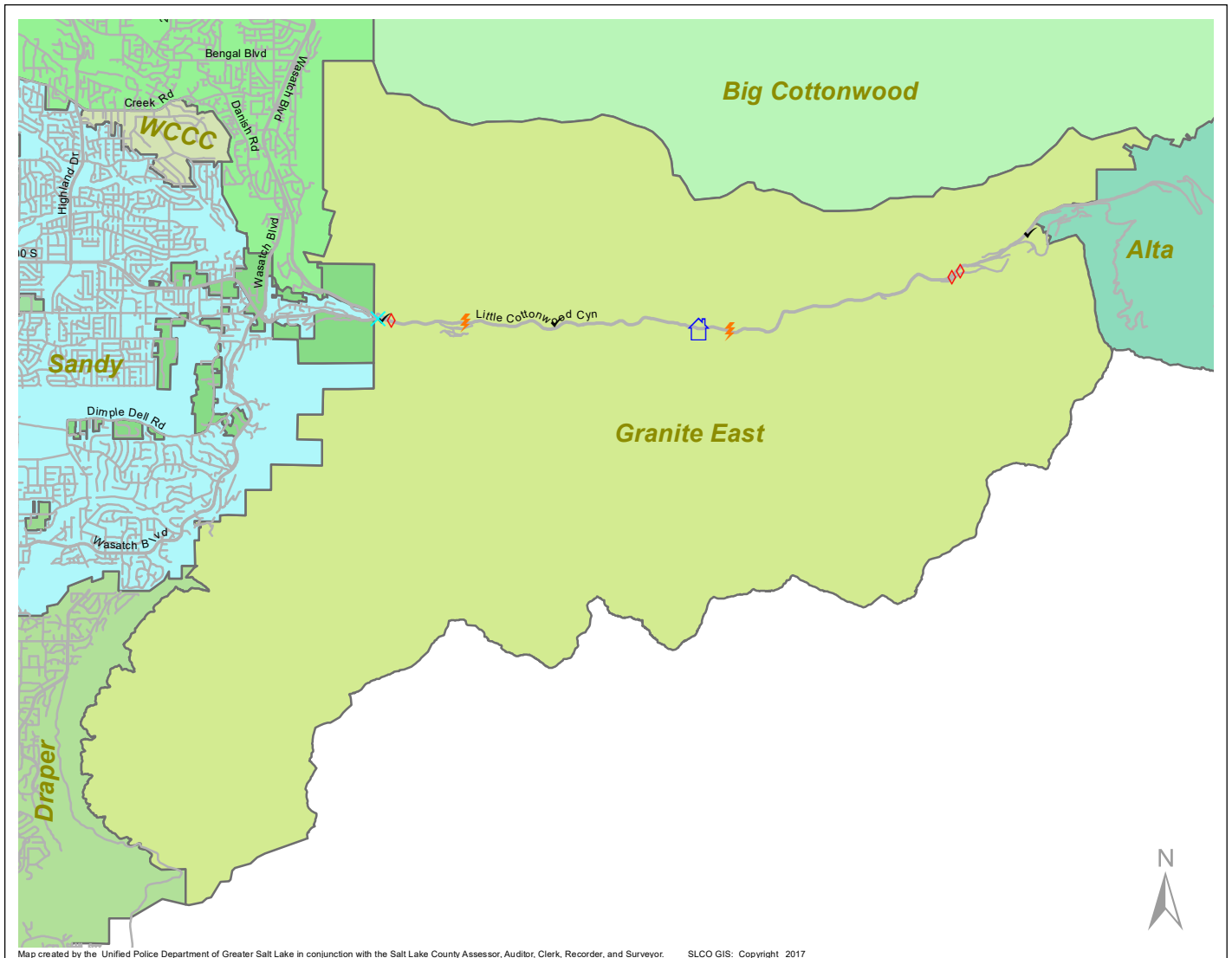
Case Report: Granite East

2017

Oct



**UNIFIED
POLICE**
GREATER SALT LAKE



Map created by the Unified Police Department of Greater Salt Lake in conjunction with the Salt Lake County Assessor, Auditor, Clerk, Recorder, and Surveyor. SLCO GIS: Copyright 2017

Total Number of Calls: 70
 Total Number of Cases: 39
 Total Number of Offenses: 45

SUMMARY OF GROUP A CRIMES	
Arson: 0	Domestic Violence: 1
Assaults: 0	Drive-By Shootings: 0
--Aggravated: 0	Drug Offenses: 2
--Simple: 0	Gang-related: 0
Auto Thefts: 0	Graffiti: 0
Burglary: 0	Hate Crimes: Unavailable
--Business: 0	Juvenile-related: Unavailable
--Residential: 0	Sex Crimes: 0
Homicide: 0	Suspicious Circumstances: 3
Sexual Assault: 0	Vandalism: 1
Robbery: 0	Weapon Violation: 0
Theft/Larceny: 0	Weapon/Force Involved: 0
Vehicle Burglary: 3	1 (Gun): 0
	2 (Knife): 0
	3 (Force Involved): 0
	5 (Unknown): 0
	6 (Rifle/Shotgun): 0

Note: These count totals represent activity in the designated area ONLY, and only during the specified time period.

- LEGEND:**
- Arson
 - Assault-Aggravated or Simple
 - Auto Theft
 - Burglary-Business or Residential
 - Domestic Violence
 - Drive-By Shooting
 - Drug-related Offense
 - Graffiti
 - Homicide
 - Sexual Assault
 - Robbery
 - Sex Offense
 - Suspicious Circumstance
 - Theft/Larceny
 - Vandalism
 - Vehicle Burglary
 - Weapon Violation