

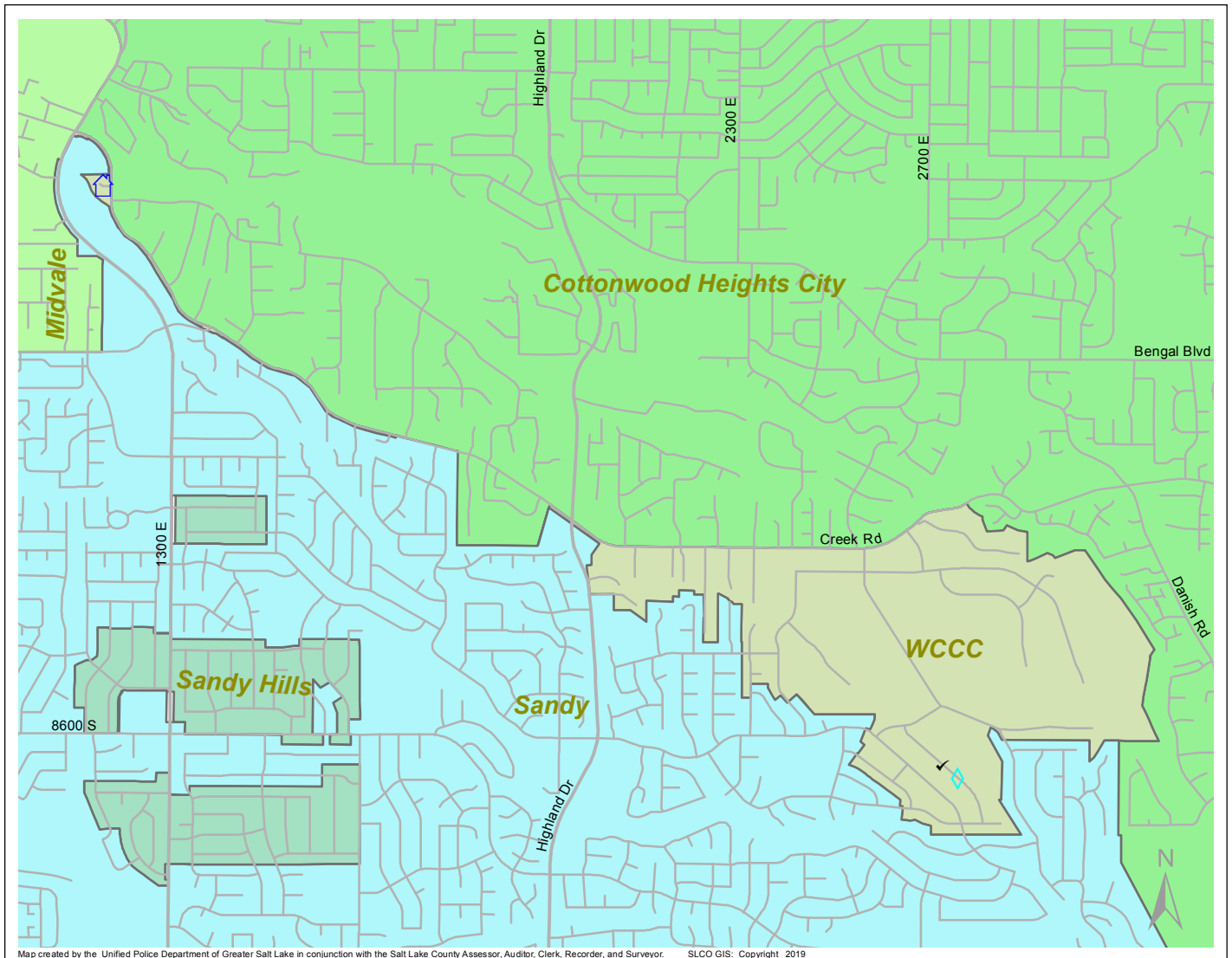
# Case Report: WCCC

2019

Jun



**UNIFIED  
POLICE**  
GREATER SALT LAKE



Map created by the Unified Police Department of Greater Salt Lake in conjunction with the Salt Lake County Assessor, Auditor, Clerk, Recorder, and Surveyor. SLCO GIS: Copyright 2019

Total Number of Calls: 28  
 Total Number of Cases: 12  
 Total Number of Offenses: 12

SUMMARY OF GROUP A CRIMES	
<b>Arson:</b> 0	<b>Domestic Violence:</b> 1
<b>Assaults:</b> 0	<b>Drive-By Shootings:</b> 0
--Aggravated: 0	<b>Drug Offenses:</b> 0
--Simple: 0	<b>Gang-related:</b> 0
<b>Auto Thefts:</b> 0	<b>Graffiti:</b> 0
<b>Burglary:</b> 0	<b>Hate Crimes:</b> Unavailable
--Business: 0	<b>Juvenile-related:</b> Unavailable
--Residential: 0	<b>Sex Crimes:</b> 0
<b>Homicide:</b> 0	<b>Suspicious Circumstances:</b> 1
<b>Sexual Assault:</b> 0	<b>Vandalism:</b> 0
<b>Robbery:</b> 0	<b>Weapon Violation:</b> 0
<b>Theft/Larceny:</b> 1	<b>Weapon/Force Involved:</b> 0
<b>Vehicle Burglary:</b> 0	1 (Gun): 0
	2 (Knife): 0
	3 (Force Involved): 0
	5 (Unknown): 0
	6 (Rifle/Shotgun): 0

Note: These count totals represent activity in the designated area ONLY, and only during the specified time period.

- LEGEND:**
- Arson
  - Assault-Aggravated or Simple
  - Auto Theft
  - Burglary-Business or Residential
  - Domestic Violence
  - Drive-By Shooting
  - Drug-related Offense
  - Graffiti
  - Homicide
  - Sexual Assault
  - Robbery
  - Sex Offense
  - Suspicious Circumstance
  - Theft/Larceny
  - Vehicle Burglary
  - Weapon Violation